



Modeling and Analysis of Accident in an Urban Area

Rajesh Kumar Maurya and Janaki Ballav Swain

EasyChair preprints are intended for rapid dissemination of research results and are integrated with the rest of EasyChair.

October 6, 2022

MODELING AND ANALYSIS OF ACCIDENT IN AN URBAN AREA

Rajesh Kumar Maurya^a, Dr. Janki Ballav Swain^{*b}

^aM.Tech Student, School of Civil Engineering, Lovely Professional University Punjab, India

rajeshmaurya00007@gmail.com

^{*b}Assistant Professor, School of Civil Engineering, Lovely Professional University Punjab, India

Janaki.22747@lpu.co.in

*Corresponding Author

Abstract

Every year, it is estimated that over 3,00,000 people die, and 1-1.5 lakh people are wounded in traffic accidents throughout the world. In this study we were doing accidents hotspot analysis of Prayagraj, Uttar Pradesh. Accidental data at various places in a study area is collected from SP Traffic office and with the help ArcGIS software. In this study includes the accident analysis in which prioritization of some major places of hotspot area is done by the ArcGIS, with the help of two different method first is Getis-Ord G_i^* and Kernel Density Estimation method. Each data point represents single vehicle accident. At the same location multiple accidents have been observed. To identify such locations where multiple accidents were reported (Black spots) by using Hotspot analysis in ArcGIS. The Getis-Ord G_i^* statistics is calculated by Hotspot analysis for every accidental dataset. The present study gives a z-score value of 47.82, there is less than 1% likelihood that is cluster pattern which means, a greater number of possible of occurrence of clustered pattern that is 99%. And in the kernel density method we analyzed for hotspot areas using point feature in kernel density tool. KDE has classified the number of accidents as very low, low, medium and very high. Hence it shows both the methods adopted for accidental data analysis using Hotspot analysis tool are perfectly matching with results but kernel density is gives better result. The Hotspot analysis study Black spots were identified and in turn advised to government that identified location must be considered to take preventive measures to reduce number of accidents.

Keywords: *Accidents, Hotspot Analysis, Getis-Ord G_i^* method, Kernel Density Estimation.*

1. Introduction

1.1 Background

“Loss, casualty, injury, and damage occurred unintentionally due to increase in number of vehicles on road or lack of presence of mind during driving a vehicle and the loss has happened unfortunately is termed as accident. Although road accidents cannot be completely avoided, they can be mitigated to some extent with proper traffic engineering and management. (Dandona) As a result, a comprehensive investigation of traffic accidents is essential. A thorough assessment of the accident's cause will aid in the development of preventative design and control measures. The existing road network in the city is inadequate. Functionally the roads do not have any hierarchy as each individual road changes its characteristics after a short distance. At present around 4.6% of the total developed area is devoted to roads which is much below the desired level. (Rabbani) Moreover, the vehicular population growth is quite high, with just 4,384 registered motor vehicles in 1981 to 2,94,164 in 2001, an increase of around 67 fold in the span of two-decades. Every year, it is estimated that over 3,00,000 people die and 1-1.5 lakh people are wounded in traffic accidents throughout the world. In compared to industrialized countries, detailed analysis of worldwide accident records shows that death rates per licensed vehicle in underdeveloped countries are quite high. Furthermore, road accidents have been proven to cost poor nations roughly 1% of their yearly gross national product (GNP), which they cannot afford to lose. (Anderson) Bangalore's rapid population boom due to IT and other related businesses resulted in a vehicle population rise of around 1.5 million, with an annual growth rate of 7-10 percent. Urban transport facilities in most of the Indian cities are inadequate and deteriorating over the years. The development of public transport system has not kept pace with the traffic demand both in terms of quality and quantity. As a result, the use of the undesirable modes such as personalized transport, mainly two-wheelers, and intermediate public transport, mainly three-wheelers, is growing at a rapid speed. The existing road network in the city is inadequate. Functionally the roads do not have any hierarchy as each individual road changes its characteristics after a short distance.

1.2 Objective

In this work we have done a statistical analysis, which is the study of collection, analysis, interpretation, and presentation of sample data. It is used to refer to a collection of methods used to refer to a collection of methods used to process large data collected and to produce an overall report.

1. The Getis-Ord G_i^* statistic (pronounced G-I-star) is calculated by the Hot Spot Analysis tool for each feature in a dataset.
2. The Kernel Density tool is used to determine the density of features in the vicinity. In this tool there are two type of method to that is point and linear features to calculating the KDE.

2. Study Area

The study area includes major accident spots in Prayagraj, Uttar Pradesh located at 25°26'3.69" N, 81°50'48.81" E which has population of 20.50 Lakhs as per Master plan 2021. In comparison to 2018, 2019 and 2020 accident data a greater number of accidents took place in the year 2019. In total 1413 accidents took place in the year 2019 among them Grievously injured, Minor injury and killed are 612, 353, and 599 respectively. State Highway is seen as dominating over National Highway and other roads in terms of accidental rates. The study visits to these hazardous locations and collecting the data required from GIS and cross checking from taken the data by police record.

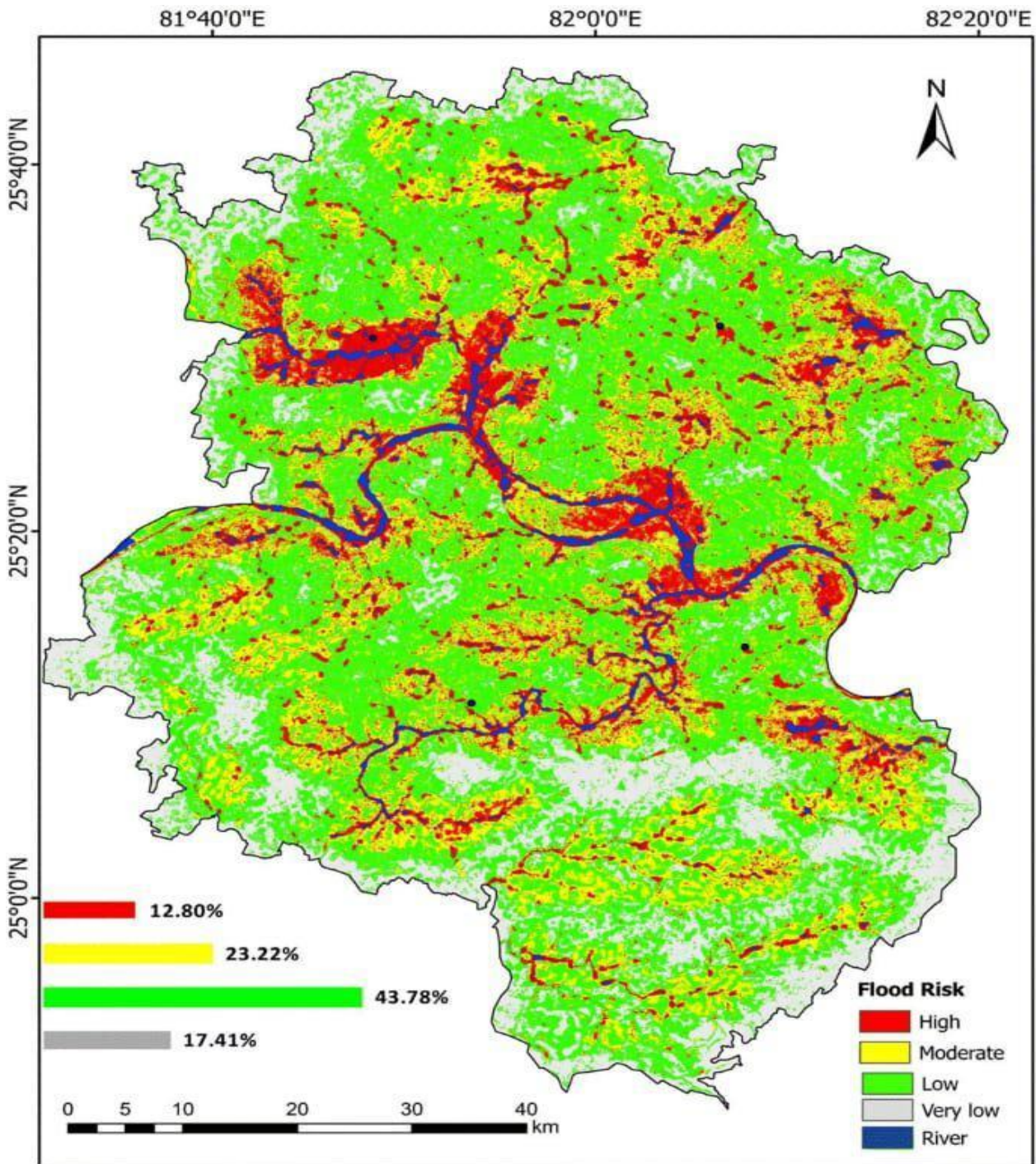


Figure 1: Study area showing Prayagraj, Uttar Pradesh

3. Methodology

The research study's technique, which was used, has undergone the Modelling and analysis of accident in an urban area in Prayagraj, Uttar Pradesh. Method for analyzing of accidental data at various hotspot places in a study area is using Hotspot analysis of ArcGIS software. The following chart shows the main steps of research works The Getis-Ord G_i^* statistic (pronounced G-i-star) is calculated by the Hot Spot Analysis tool for each feature in a dataset. The z-scores and p-values that result indicate where characteristics with high or low values cluster spatially. This tool operates by examining each feature in the context of its surroundings. A high-value feature is intriguing, but it may or may not be a statistically significant hotspot. A statistically significant z-score is obtained when the local sum for a feature and its neighbors is compared proportionally to the sum of all features. When the local sum differs significantly from the expected local sum, and the difference is

too large to be due to chance, a statistically significant z-score is obtained

Kernel Density Estimation: - The Kernel Density instrument establishes the density of features the region around those features. In this tool there are two types of method to that is point and linear features to calculating the KDE. In KDE method we are finding the density of houses and accident data of the various places and hotspot analysis of roads are all possibilities. In the KDE method the density of method of point feature around each final output raster value have measured. Each point is covered by a smooth curving surface. The surface value is highest at the point's position and decreases as distance from the heighten awareness, ultimately hitting zero at the Search radius distance from the point.

4. Results and Discussion

4.1 Result

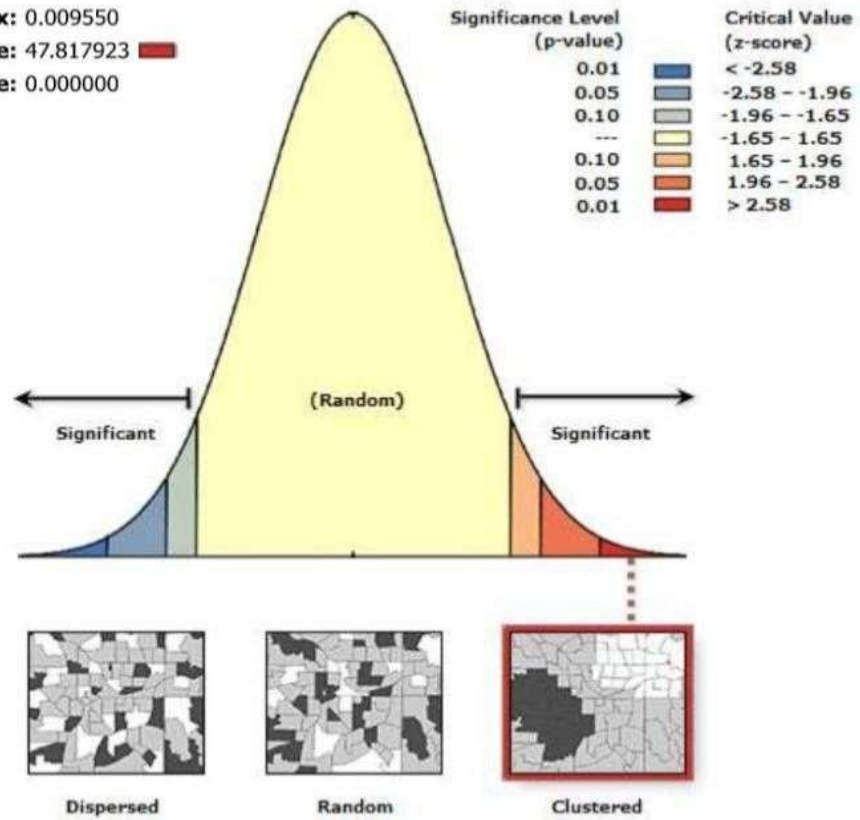
The study is under consideration for research study in Prayagraj, Uttar Pradesh. The present study includes analysis of accidental data collected from S.P traffic office, which is loaded into ArcGIS software program. Each data point represents single vehicle accident. At the same location multiple accidents have been observed. To identify such locations where multiple accidents were reported (Black spots) by using Hotspot analysis in ArcGIS. Further to know whether the high or low clustering value is differential using Kernel Density tool and Getis-Ord G_i^* statistical approach. The Getis-Ord G_i^* statistics is calculated by Hotspot analysis for every accidental dataset. Significant level of (p-value) varies from 0, 0.10, 0.05 and 0.01 on the both side of probability curve and Critical value (z-score) varies from less than -2.58 to greater than 2.58. The present study gives a z-score value of 47.82, there is less than 1% likelihood that is cluster pattern which means, more number of possible of occurrence of clustered pattern that is 99%.

Spatial Autocorrelation Report

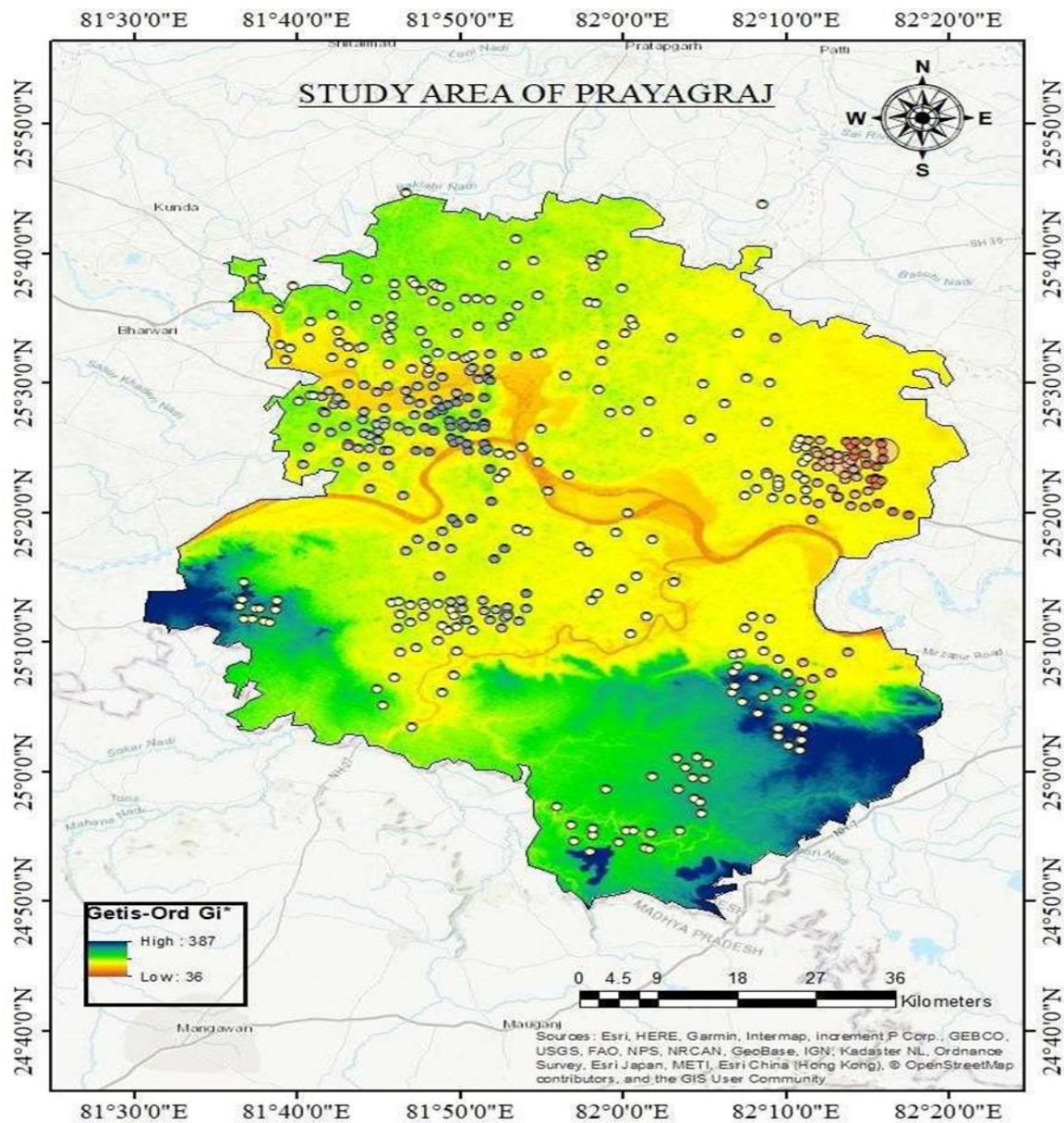
Moran's Index: 0.009550

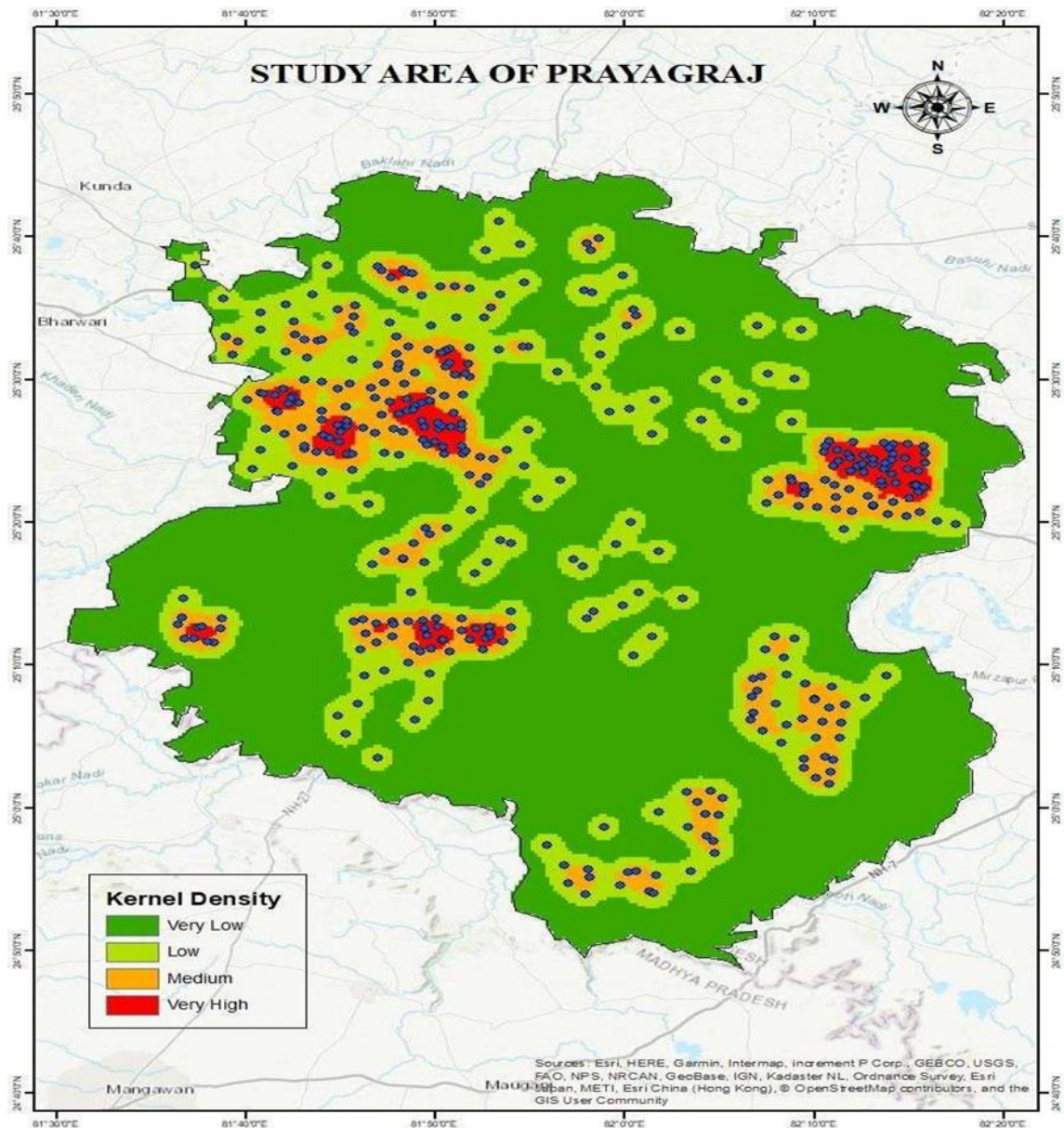
z-score: 47.817923

p-value: 0.000000



Given the z-score of 47.82, there is a less than 1% likelihood that this clustered pattern could be the result of random chance.





Kernel density estimation method is used to determine the density of feature of accidental data set. In this tool it has two different method of approach that is point and linear feature for calculating the KDE. The research study has analyzed for hotspot areas using point feature in kernel density tool. KDE has classified the number of accidents as very low, low, medium, and very high.

4.2 Discussion

In this present study of Hotspot analysis using Getis-Ord G_i^* approach because it is a statistical analysis of hotspot analysis tool which in turn gives critical value (z-score) and significant value (p-value) and type of pattern of accident is noticed but KDE tool is utilized to verify the multiple accidents occurring at same location is classified based on density.

5. Conclusion

It was observed from research study that, multiple accidents occurring at same location is identified by Getis-Ord G_i^* statistical approach and Kernel Density Estimation approach in hotspot analysis tool. Figure 10 and figure 11 shows a common location highlighted as red color are considered as hotspots. Hence it shows both the methods adopted for accidental data analysis using Hotspot analysis tool are perfectly matching with results and it is concluded that possibility of accidents occurrence is in clustered pattern from. The Hotspot analysis study Black spots were identified and in turn advised to government that identified location must be considered to take preventive steps to reduce considered to take preventive steps to reduce number of accidents.

References

- Anderson, Tessa K. *Kernel density estimation and K-means clustering to profile road accident hotspots*. Accident Analysis & Prevention 41, no. 3, 2009.
- Benedek, József, Silviu Marian Ciobanu, and Titus Cristian Man. *Hotspots and social background of urban traffic crashes: A case study in Cluj-Napoca (Romania)*. Accident Analysis & Prevention 87, 2016.
- Bíl, Michal, Richard Andrášik, and Jiří Sedoník. *A detailed spatiotemporal analysis of traffic crash hotspots*. Applied geography 107, 2019.
- Chen, Xiuqin, Limei Huang, Dajun Dai, Meiyong Zhu, and Kezhi Jin. *Hotspots of road traffic crashes in a redeveloping area of Shanghai*. 2018: International journal of injury control and safety promotion 25, no. 3, n.d.
- Cheng, Wen, and Simon Washington. *New criteria for evaluating methods of identifying hot spots*. Transportation Research Record 2083, no. 1, 2008.
- Dandona, Rakhi, G. Anil Kumar, and Lalit Dandona. *Risky behavior of drivers of motorized two wheeled vehicles in India*. Journal of safety research 37, 2006.
- Dereli, Mehmet Ali, and Saffet Erdogan. *A new model for determining the traffic accident black spots using GIS-aided spatial statistical methods*. Transportation Research Part A: Policy and Practice 103, 2017.
- Erdogan, Saffet, Veli İlçi, Omer M. Soysal, and Aysegul Kormaz. *A model suggestion for the determination of the traffic accident hotspots on the Turkish highway road network: A pilot study*. Boletim de Ciências Geodésicas 21, 2015.
- Hayidso, Temesgen Haile, Dessalegn Obsi Gemedra, and Ashenif Melese Abraham. *"Identifying road traffic accidents hotspots areas using GIS in Ethiopia: a case study of Hosanna Town"*. Transport and Telecommunication 20, no. 2, 2019.
- Katageri S, S. R. (2015). Pattern of injuries in road traffic accidents at Chitradurga Karnataka. *An autopsy-based study.* Journal of Indian Academy of Forensic Medicine 37.2, 173-175.
- Mohaymany, Afshin Shariat, Matin Shahri, and Babak Mirbagheri. *"GIS-based method for detecting high- crash-risk road segments using network kernel density estimation"*. Geo-spatial Information Science 16, no. 2, 2013.
- Pulugurtha, Srinivas S., Venkata Ramana Duddu, and Yashaswi Kotagiri. *Traffic analysis zone level crash estimation models based on land use characteristics*. Accident Analysis & Prevention 50, 2013.
- Rabbani, Muhammad Babar Ali, P. D. S. A. Khan, Dr Qaiser Iqbal, and Engineer Qamar Zaman. *Analysis of vehicle accidents using spatio-temporal tools in ArcGIS; a case study of Hayatabad, Peshawar*. poral tools in ArcGIS; a case study of Hayatabad, Peshawar." International journal of engineering works 6, no. 12, 2019.

- Rankavat, Shalini, and G. E. E. T. A. M. Tiwari. *Pedestrian accident analysis in Delhi using GIS*. Journal of the Eastern Asia Society for Transportation Studies 10, 2013.
- Rao, Dinesh, and S. Mukerjee. *A STUDY OF PATTERN OF INJURIES IN ROAD TRAFFIC COLLISIONS*. Journal of Punjab Academy of Forensic Medicine & Toxicology 10, 2010.
- Ruikar, Manisha. *National statistics of road traffic accidents in India*. Journal of Orthopedics, Traumatology and Rehabilitation 6, no. 1, 2013.
- Sandhu, H. A. S., Gyanendra Singh, M. S. Sisodia, and Rajiv Chauhan. *Identification of black spots on highway with kernel density estimation method*. Journal of the Indian Society of Remote Sensing 44, no. 3, 2016.
- Shafabakhsh, Gholam Ali, Afshin Famili, and Mohammad Sadegh Bahadori. *GIS-Based Spatial Analysis of Urban Traffic Accidents: Case Study in Mashhad, Iran*. Journal of Traffic and Transportation Engineering (English Edition) 4(3), 2017.
- Singh, Priya P., Chandra S. Sabnani, and Vijay S. Kapse. *Hotspot Analysis of Structure Fires in Urban Agglomeration: A Case of Nagpur City, India*. Fire 4(3), 2021.
- Zahrán, El Said M. M., Soon Jiann Tan, Yok Hoe Yap, Ena K. A. Rahman, and Nurulhikmah H. Husaini. *A Novel Approach for Identification and Ranking of Road Traffic Accident Hotspots*. MATEC Web of Conferences 124, 2017.
- Zahrán, El Said Mamdouh Mahmoud, Soon Jiann Tan, Eng Hie Angel Tan, Nurul Amirah Atiqah Binti Mohamad 'Asri Putra, Yok Hoe Yap, and Ena Kartina Abdul Rahman. *Spatial Analysis of Road Traffic Accident Hotspots: Evaluation and Validation of Recent Approaches Using Road Safety Audit*. Journal of Transportation Safety and Security 13(6), 2021.
- ZahránEl-Said, M. M., Tan Soon Jiann, Nurul Amirah 'Atiqah Binti Mohamad 'Asri Putra, Eng Hie Angel Tan, Yok Hoe Yap, and Ena Kartina Abdul Rahman. *Evaluation of Various GIS-Based Methods for the Analysis of Road Traffic Accident Hotspot*. MATEC Web of Conferences 258, 2019.
- Transforming India's Mobility*. (n.d.). Retrieved from NITI Aayog NATIONAL PORTAL OF INDIA: https://www.niti.gov.in/writereaddata/files/document_publication/BCG.pdf
- Yakupova, G. P. (2020). Identification of factors affecting the road traffic injury rate. *Transportation research procedia* 50, 735-742.
- Zepernick, H.-J. a. (2017.). Descriptive statistical analysis of subjective experiments in mobile imaging. *2017 11th International Conference on Signal Processing and Communication Systems (ICSPCS)*. IEEE, 1-7.